

JBC

www.jbctools.com



1 Tool Control Unit

Ref. DI-D

Packing List

The following items should be included:

DI Control Unit 1 unit
Ref. DI-1D (120V)
DI-2D (230V)
DI-9D (100V)

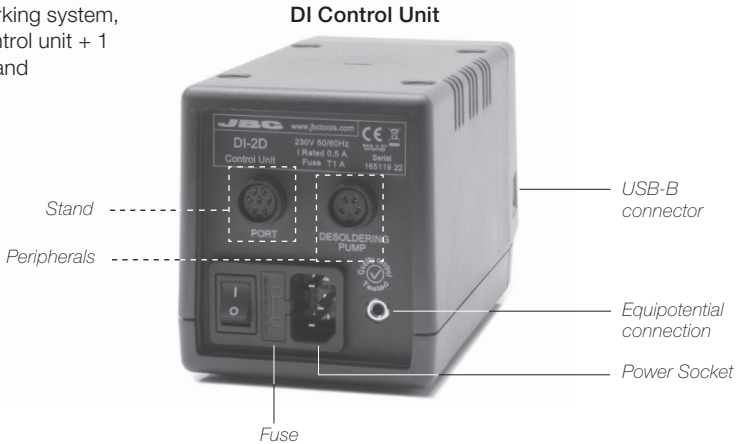
Power Cord 1 unit
Ref. 0009417 (230V)
0009401 (100/120V)

Manual 1 unit
Ref. 0014650



Connections

For a basic working system, you need 1 control unit + 1 stand + 1 tool and 1 cartridge.



Compatibility

Select the equipment that best suit your soldering or desoldering needs.

Basic working system				Peripherals				
Control Unit	Stand	Tool	Cartridge Range	MS-A MV-A	MN-A	FS500-1A FS500-2A	P-005	
DI-D	AD-SD	T210-A	C210			●	●	
		T245-A	C245			●	●	
		T470-A	C245			●	●	
	DN-SE	T210-NA*	C210					
		T245-NA*		●		●		
		T470-NA*	C245					
	AP-SD	AP250-A	C250			●	●	
	PA-SD	PA120-A	C120			●	●	
	HT-SD	HT420-A	C420			●	●	
	DS-SD	DS360-A	C360	●			●	
DR-SD	DR560-A	C560	●			●		

* The MN-A Nitrogen Flow Regulator is required.

Operation

The JBC Exclusive Heating System

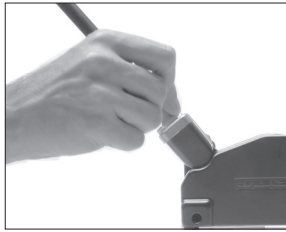
Our revolutionary technology is able to recover tip temperature extremely quickly. It means the user can work at a lower temperature and improve the quality of soldering. The tip temperature is further reduced thanks to the Sleep and Hibernation modes which increase the tip life by 5.

1. Work



When the tool is lifted from the stand the tip will heat up to the selected temperature.

2. Sleep

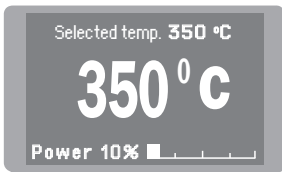


When the tool is in the stand, the temperature falls to the preset sleep temperature.

3. Hibernation



After longer periods of inactivity, the power is cut off and the tool cools down to room temperature.



- Change temperature (from 90 to 450°C)
- Select temperature levels
- Fix one temperature



- Change Sleep temperature
- Set Sleep delay (from 0 to 9 min or no Sleep)



- Set Hibernation delay (from 0 to 60 min or no hibernation)

Control Process

Work Screen

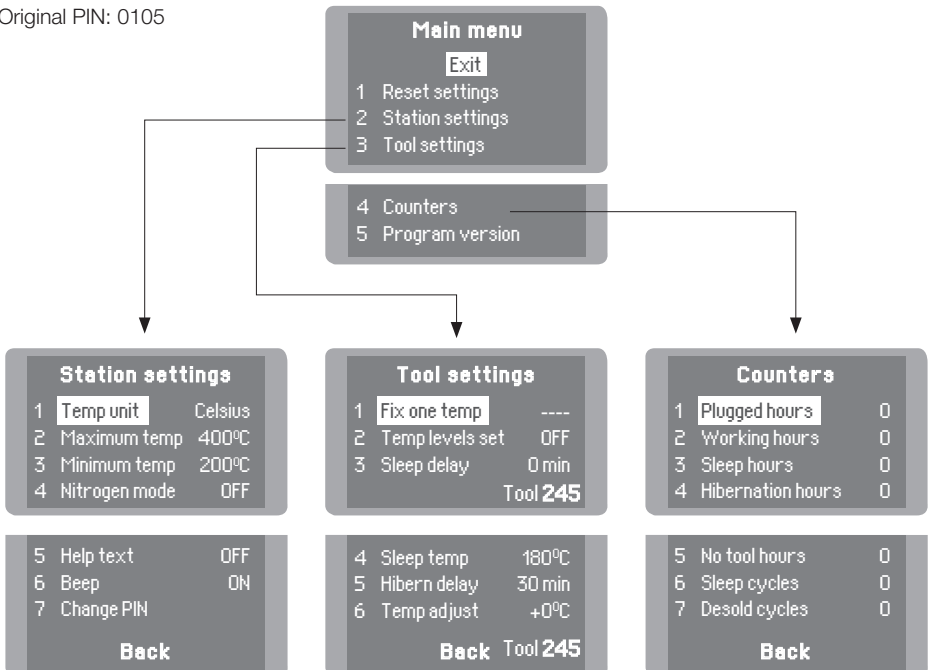
The work screen provides useful information of tool status in real time.

Displays a specific fixed temp.

Shown once you have selected temp. levels.

Menu Screen

Original PIN: 0105



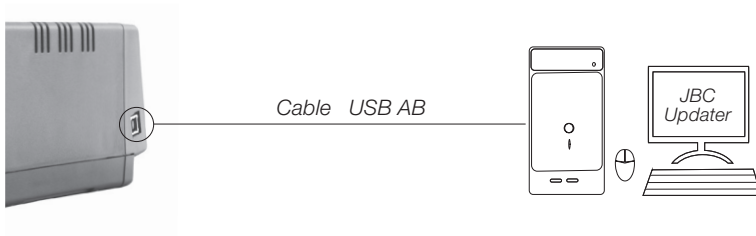
USB Connector

Download the latest software from our website to improve your soldering station.

JBC Updater

www.jbctools.com/software.html

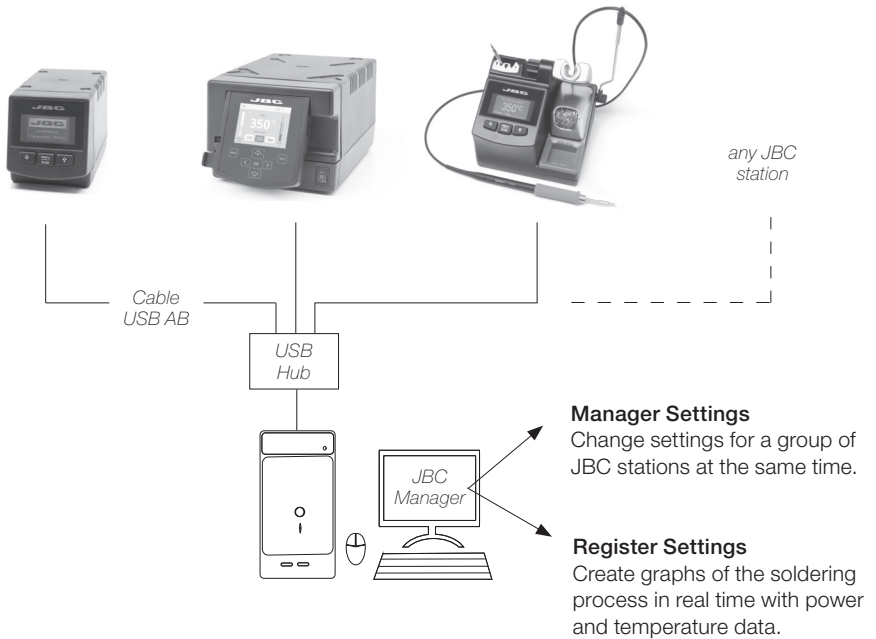
Update the station software via USB connection:



JBC Manager

www.jbctools.com/manager.html

Manage and monitor as many stations as your PC can handle by using the JBC Manager. You can export data to another PC.



Maintenance

Before carrying out maintenance or storage, always allow the equipment to cool and unplug the stand from the station and the tool.

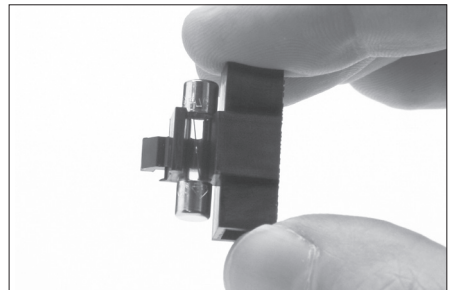
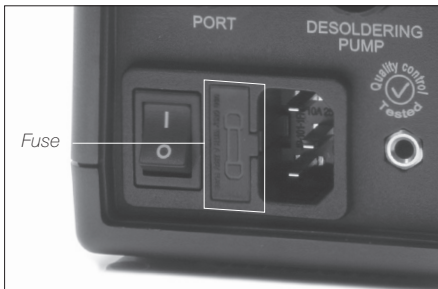
- Clean the station screen with a glass cleaner or a damp cloth.
- Use a damp cloth to clean the casing, the stand and the tool. Alcohol can only be used for cleaning the metal parts.
- Periodically check that the metal parts of the tool and stand are clean so that the station can detect the tool status.
- Maintain tip surface clean and tinned prior to storage in order to avoid tip oxidation. Rusty and dirty surfaces reduce heat transfer to the solder joint.
- Periodically check all cable connections.
- Replace a blown fuse as follows:

Clean periodically



1. Pull off the fuse holder and remove the fuse. If necessary use a tool to lever it off.

2. Press the new fuse into the fuse holder and replace it in the station.



- Replace any defective or damaged pieces. Use original JBC spare parts only.
- Repairs should only be performed by a JBC authorized technical service.

Safety



It is imperative to follow safety guidelines to prevent electric shock, injury, fire or explosion.

- Do not use the units for any purpose other than soldering or rework. Incorrect use may cause fire.
- The power cord must be plugged into approved bases. Be sure that it is properly grounded before use. When unplugging it, hold the plug, not the wire.
- Do not work on electrically live parts.
- The tool should be placed in the stand when not in use in order to activate the sleep mode. The soldering tip, the metal part of the tool and the stand may still be hot even when the station is turned off. Handle with care, including when adjusting the stand position.
- Do not leave the appliance unattended when it is on.
- Do not cover the ventilation grills. Heat can cause inflammable products to ignite.
- Avoid the contact of flux with skin or eyes to prevent irritation.
- Be careful with the fumes produced when soldering.
- Keep your workplace clean and tidy. Wear appropriate protection glasses and gloves when working off to avoid personal harm.
- Utmost care must be taken with liquid tin waste which can cause burns.
- This appliance can be used by children over the age of eight and also persons with reduced physical, sensory or mental capabilities or lack of experience provided that they have been given adequate supervision or instruction concerning use of the appliance and understand the hazards involved. Children must not play with the appliance.
- Maintenance must not be carried out by children unless supervised.

Exploded View

DI-1D 120V
DI-2D 230V
DI-9D 100V

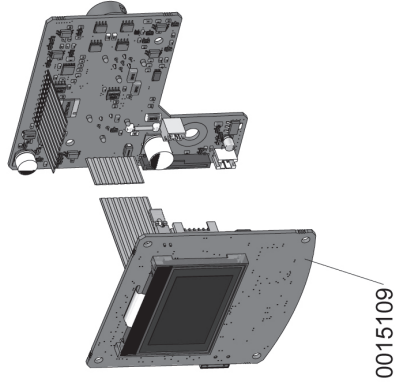
ONE-TOOL CONTROL UNIT
FROM SERIE 168498

DI-1D / DI-2D / DI-9D



SPARE PARTS	
DI-1D / DI-2D / DI-9D:	
-CIRCUIT	0015109
-ENCLOSURE	
· TOP	0011435
· BOTTOM	0014032
· FRONT	0013830
· BACK	0003506

DI-1D 120V FUSE T-2A
DI-2D 230V FUSE T-1A
DI-9D 100V FUSE T-2,5A



Specifications

DI-1D 120V 50/60Hz. Input fuse: 2A. Output: 23.5V.

DI-2D 230V 50/60Hz. Input fuse: 1A. Output: 23.5V.

DI-9D 100V 50/60Hz. Input fuse: 2.5A. Output: 23.5V.

- Weight: 2.153 kg (4.74 lb)
- Dimensions: 90 x 105 x 180 mm
- Output Peak Power CD-BE: 130W
- Temperature Range: 90 - 450 °C / 190 - 840 °F (±5%)
- Idle Temp. Stability (still air): ±1.5 °C / ±3 °F
- Tip to ground resistance: <2 ohms
- Tip to ground voltage: <2mV RMS
- Ambient operating temp: 10 - 40 °C / 50 - 104 °F
- Connections: USB-B / Peripherals connectors

Complies with CE standards

ESD protected housing "skin effect"

JBC

Warranty

JBC's 2 year warranty covers this equipment against all manufacturing defects, including the replacement of defective parts and labour.

Warranty does not cover product wear due to use or mis-use.

In order for the warranty to be valid, equipment must be returned, postage paid, to the dealer where it was purchased.



This product should not be thrown in the garbage.

In accordance with the European directive 2002/96/EC, electronic equipment at the end of their life must be collected and returned to an authorized recycling facility.

Manual in other languages available on our website

www.jbctools.com

0014650-0816